

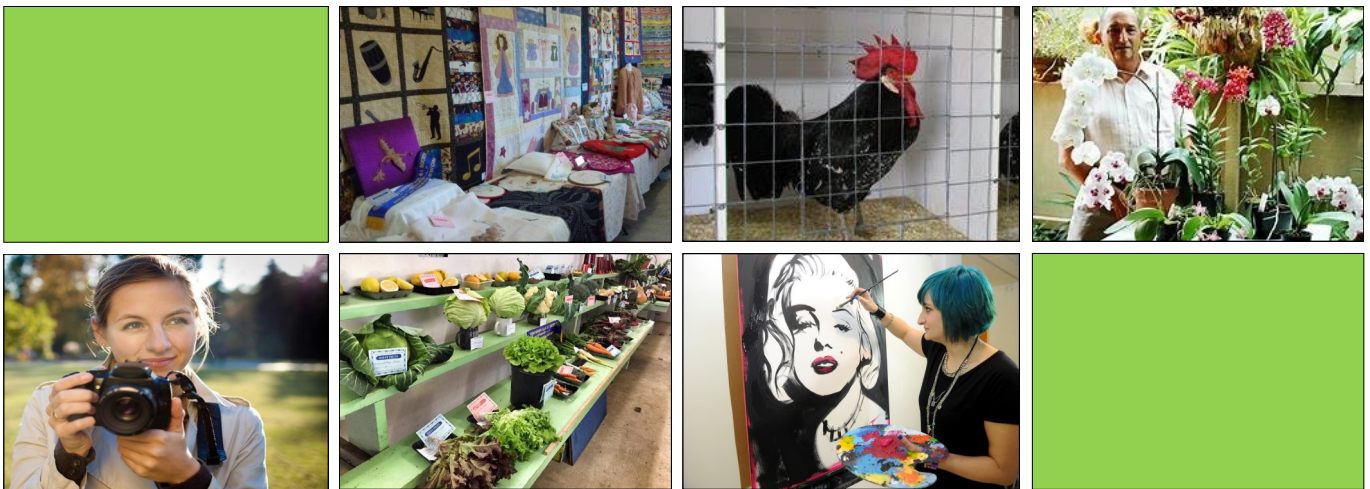


73rd ANNUAL

CAMDEN HAVEN SHOW

Saturday 19th & Sunday 20th

October 2024



PAVILION SCHEDULE

including Junior Sections

PLEASE NOTE:

All exhibitors to pay Gate Entry

♦ *Entry Forms in back of booklet*

GATE ENTRY:

- ♦ Adults - \$10
- ♦ Concession & under 18s - \$5
- ♦ Under 12s - Free

For further schedules & information visit our website: www.camdenhavenshow.org.au

GENERAL CONDITIONS OF ENTRY

1. While every care is taken to protect entries, the Camden Haven PAH&I Society will not be held responsible for any loss or damage to any of the exhibits during the Show.
2. All exhibits must be received before close of entries and will be accepted during the week before the Show.
3. Juniors 16 years & under - entries are FREE.
4. No late entries will be accepted.
5. The judge's decision will be final.
6. There must be two or more competitive entries in each class of each section, or a prize will not necessarily be awarded.
7. Previous prizewinning articles may not be entered.
8. All entries must be clearly written on the entry form to ensure it goes into the correct class.
9. The judges may withhold all prizes if they consider no exhibit worthy of a prize. If there are not more than three entries in any one class, the prize may be curtailed. Where equal first prizes are awarded, no second prize will be awarded and the prize money will be equally divided, but full first, or second, points will be awarded to each exhibit.
10. Prize money may be collected from the Secretary's office AFTER 12noon on Saturday. Any prize money not collected after Wednesday 16th October 2024 will be accepted as a donation to the Show Society funds.
11. When collecting prize money, please state all sections that you entered.
12. Exhibits may be collected from the pavilion AFTER 4:30pm on Sunday. Displays will be closed at 4:00pm to enable this to assist security.
13. Under no circumstances may exhibits be removed before 4:30pm or without the knowledge of the Steward in charge of the section.
14. Please advise Pavilion Steward if your entry is for sale and indicate your price.

- CATEGORIES -

- ◆ Art
 - Senior
 - Junior & Youth Art
- ◆ Cake Decorating
- ◆ Cooking
- ◆ The Country Pantry
- ◆ Needlework & Yarn work
- ◆ Handicrafts- Adult
 - Junior - School
 - Senior - School
- ◆ Photography
- ◆ Horticulture
 - Fruit & Vegetables
 - Potted Plants
 - Cut Flowers
 - Floral Art

Camden Haven PAH&I Society Inc.

PO Box 23 Kendall NSW 2439

23 Batar Creek Road Kendall

Showground phone: (02) 6559 4463

Email: kendallshowground@bigpond.com



ART

STEWARD: Terri Maddock (phone 0412 004 989); email: bonnyviewstudio@gmail.com

ENTRIES CLOSE: Wednesday 16th October 2024

ENTRY FEE: \$5 per artwork

JUDGE: TBA

CONDITIONS OF ENTRY:

- Entries must be the original work of the artist and not previously exhibited at the Camden Haven Show.
- All artists are limited to five (5) entries only.
- Entries must not exceed 12 sq ft (90 x 120cm) including frame.
- All entries need to be clearly labelled on the back with Artist's name, Class, Title, medium used, Price (if for sale), and be ready to hang with "D" rings and suitable cord/wire.
- Unframed works will be accepted if they are suitably mounted, matted and cellophaned – these works will be pinned to the display wall through the corners of the cellophane.
- The Camden Haven PAH & I Society will retain 20% commission on all sales of work.
- The Society reserves the right to exhibit any piece of work on TV or in the press.
- Any work deemed unsuitable for hanging will be withheld from the exhibition. This includes works that still have wet paint!

***All entries to be delivered to the Showground between 8:30am and 10.00am
on Friday 18th October 2024.***

Pick up Sunday 20th October 2024 from 4:30pm – 5:30pm.

ADULT ART SECTION

Sponsored by: Hastings Valley Fine Art Association

OVERALL Champion Award (\$50 & CHAMPION RIBBON)

Winning entry not eligible for any other award

CLASS A OIL & ACRYLIC - 1st \$30; 2nd \$15

Including collage

CLASS B WATERCOLOUR - 1st \$30; 2nd \$15

CLASS C PASTELS - 1st \$30; 2nd \$15

CLASS D DRAWING - 1st \$30; 2nd \$15

*Please note Classes C and D may be combined if not enough entries are received.
Contact Terri if you have any questions about entries for this year's Show.*



Hastings Valley
Fine Art Association

JUNIOR AND YOUTH ART

STEWARD:	Margaret O'Brien (phone 0402 239 695)		
ENTRIES CLOSE:	5pm on Wednesday 16th October 2024		
ENTRY FEE:	Free		
PRIZES:	Preschool:	1st \$2.00	2nd \$1.50 3rd \$1.00
	Kindergarten - Year 2	1st \$2.50	2nd \$2.00 3rd \$1.50
	Year 3 - Year 6	1st \$4.00	2nd \$3.50 3rd \$2.50
	Year 7 - Year 9	1st \$5.00	2nd \$4.00 3rd \$3.00
	Year 10 - Year 12	1st \$7.00	2nd \$5.00 3rd \$4.00

*Sash and \$10 for the Judge's overall choice for entry
from Preschool, Primary School and High School*

SPONSORED BY YOUR FAMILY PRACTICE & COASTLINE CREDIT UNION

CONDITIONS OF ENTRY:

1. Please complete entry form with name, age, show class, school year, and school, (please provide individual contact details if entry is not being submitted through a school.)
2. For entries coming from schools, please ensure that your artworks are available for collection on Wednesday 25th September. Otherwise please ensure your artworks are delivered to the showground by 5pm on Wednesday 16th October. Entries collected from schools will be returned by Wednesday 23rd October.
3. Individually entered pieces need to be collected from the pavilion from 4.30pm on Sunday 20th October.
4. Works should be an original piece created by the entrant since last year's show, in a 2D format. Entries need to be in a format that can be pinned to the display board.
5. Closing date for entries 5pm Wednesday 16th October 2024.

***Artworks can be created using any medium: paints, pen, pencil, pastel, collage
presented in a 2D format.***

*** JUNIOR AND YOUTH ART CLASSES -**

- Class 1: Preschool
- Class 2: Kindergarten
- Class 3: Year 1
- Class 4: Year 2
- Class 5: Year 3
- Class 6: Year 4
- Class 7: Year 5
- Class 8: Year 6
- Class 9: Year 7
- Class 10: Year 8
- Class 11: Year 9
- Class 12: Year 10
- Class 13: Year 11
- Class 14: Year 12



CAKE DECORATING

STEWARD: Carol Hall (phone 0427 625 751)
ENTRIES ACCEPTED: Friday 18th October 2024 from 8:30am until 11:00am.
No entries accepted after 11:00am Friday 18th October.
ENTRY FEES: \$2 per class; Juniors 16 years & under - FREE.

CONDITIONS OF ENTRY:

- Limit of one entry per person per class.
- Classes 1 and 2 must be formal icing, **NO buttercream.**
- Reasonable use of wire, cotton, ribbon, and tulle, gelatine, piping gel, manufactured stamens and pillars.
- Flowers, leaves, ornaments and other decorations **must be edible wherever possible,** and attached to exhibit.
- Faux cake rounds/squares may be used.
- Cleats must be attached to all baseboards and all baseboards must be covered.

CLASS

1. Wedding Cake - minimum 2 tiers - 1st \$20.00; 2nd \$10.00
2. Children's Birthday Cake - maximum 2 tiers - 1st \$20.00; 2nd \$10.00
3. Speciality Cupcakes - up to 3 - 1st \$10.00; 2nd \$6.00

**** SASH for Most Outstanding Cake Decorating Exhibit**

CAKE DECORATING - Major Sponsor - Miss Nellie's Café



COOKING

STEWARD:	Carol Hall (phone 0427 625 751)
ENTRIES ACCEPTED:	Friday 18th October 2024 between 8:30am and 11:00am. No entries accepted after 11:00am Friday 18th October.
DISPLAY CLOSURES:	Sunday 20th October 2024 at 4:00pm and reopens for collection of items and prizes from 4:30pm to 5.30pm Sunday 20th October.
ENTRY FEE:	Juniors 16 years & under – FREE; Open - \$1.00
PRIZES:	Juniors – 1st \$2.00; 2nd \$1.00 Open – 1st \$4.00; 2nd \$2.00

CONDITIONS OF ENTRY: *Please read entry conditions carefully as this will avoid disappointment of any entry not being accepted.*

- Limit of one entry per person per class.
- **All entries to be presented on a paper/disposable plate for judging.**
- **No large serving trays and/or boxes.**
- A cake is made in one tin, a sponge in two tins.
- Packet mixes not permitted.
- Cakes should be baked in a square or round tin, unless otherwise stated. Ring/springform tins are not permitted.
- Muffins should not be made in paper cases.

JUNIOR CLASSES – 12 YEARS AND UNDER:

1. Plain cake, iced, undecorated
2. Novelty cake, decorated
3. Cupcakes, iced - plate of 4
4. Pikelets - plate of 4
5. Biscuits, any variety - plate of 4
6. Chocolate Crackles - plate of 4
7. Decorated Arrowroot Biscuits - plate of 4
8. Decorated Gingerbread Person - 1



CWA Kendall

JUNIOR CLASSES – 13 to 17 YEARS:

9. Plain cake, iced, undecorated
10. Novelty cake, decorated
11. Jam Drops - plate of 4
12. Cupcakes, iced - plate of 4
13. Slice, any variety - plate of 4
14. Biscuit, any variety - plate of 4

**** SASH for Most Successful Junior Exhibitor
& \$10 Prize Money ****

**CAKE DECORATING Sponsored by: CWA Kendall, CWA Bonny Hills,
CWA Port Macquarie, Taste Bakehouse, Dru Yoga**

COOKING ... continued

OPEN CLASSES:

15. Boiled fruit cake
16. Date loaf
17. Sponge, filled and un-iced
18. Plain buttercake, un-iced
19. Carrot cake, iced
20. Chocolate cake, iced
21. Syrup Cake any Flavour
22. Hummingbird Cake
23. Cupcakes, iced - plate of 4
24. Muffins, any variety - plate of 4
25. Meringues - plate of 4
26. Plain scones - plate of 4
27. Pumpkin scones - plate of 4
28. Jam drops - plate of 4
29. Anzac biscuits - plate of 4
30. Slice, baked, any kind - plate of 4
31. Slice, un-baked, any kind - plate of 4
32. Gluten free muffins - plate of 4
33. Gluten free slice - plate of 4
34. Gluten free biscuits - plate of 4
35. Gluten Free Cake



CWA Port Macquarie



CWA Bonny Hills

**** SASH for Most Successful Open Exhibitor & \$20 Prize Money ****

MEN'S CHOCOLATE CAKE CHALLENGE - Sponsored by Taste Bakehouse Laurieton

36. Men's Chocolate Cake Challenge ... just for men ... your own favourite recipe.
All entries must be the work of the male exhibitor.

RULES:

- No packet cake
- Iced - can be decorated but not necessary

Winner receives prize of \$50!!

AND bragging rights for one year!

Second Prize - \$25!!





- ◆ A copy of the recipe and method can be found below. Further regulations can be found at agshowsnsw.org.au Rich_Fruit_Cake_Handbook_V6_May_2024.pdf
- ◆ Winners at country shows will each receive a cash prize of \$20 and will be required to bake a second “Rich Fruit Cake” in order to compete in a Group Final to be conducted by each of the fourteen Groups of the Agricultural Societies Council of NSW.
- ◆ The fourteen winners at Group level will each receive a cash prize of \$30 and are required to bake a third “Rich Fruit Cake” for the final judging at the Royal Easter Show where the winner will receive a cash prize of \$100.
- ◆ **NOTE: Competitors may only represent one Show Society in a Group Final and only one Group in a State Final.**

The following recipe is compulsory for all entrants and must be printed in all schedules.

INGREDIENTS:

250g sultanas	1/4 teaspoon grated nutmeg
250 g chopped raisins	1/2 teaspoon ground ginger
250 g currants	1/2 teaspoon ground cloves
125 g chopped mixed peel	250g butter
90 g chopped red glace cherries	250g soft brown sugar
90 g chopped blanched almonds	1/2 teaspoon lemon essence OR finely grated lemon rind
1/3 cup sherry or brandy	1/2 teaspoon almond essence
250 g plain flour	1/2 teaspoon vanilla essence
60 g self-raising flour	4 large eggs

RECOMMENDED METHOD:

Mix together all the fruits and nuts and sprinkle with the sherry or brandy.

Cover and leave for at least 1 hour, but preferably overnight.

Sift together the flours and spices.

Cream together the butter and sugar with the essences.

Add the eggs one at a time, beating well after, each addition, then alternately add the fruit and flour mixtures.

Mix thoroughly. The mixture should be stiff enough to support a wooden spoon.

Place the mixture into a prepared square 20cm x 20cm (8" x 8") tin and bake in a slow oven for approximately 3 ½ - 4 hours. Allow the cake to cool in the tin.

Note: *To ensure uniformity and depending upon the size it is suggested the raisins be snipped into 2 or 3 pieces, cherries into 4-6 pieces and almonds crosswise into 3-4 pieces.*



THE COUNTRY PANTRY

STEWARD: Pam McLeod (phone 6559 4313)
ENTRIES CLOSE: 12:00 noon Friday 18th October 2024
ENTRY FEE: \$1.00; Juniors 16 years & under - FREE.
PRIZES: 1st - \$4.00; 2nd - \$2.00

CONDITIONS OF ENTRY:

- Bottles to be labelled with plain label with name of EXHIBIT ONLY.
- All exhibits will be opened.
- There must be two or more competitive entries in each class of each section, or a prize will not necessarily be awarded.

JAMS

1. Sweet Orange Jam
2. Grapefruit Jam
3. Cumquat Jam
4. Marmalade Jam
5. Tomato Jam
6. Strawberry Jam
7. Jam - any other variety
8. Native Jam
9. Collection of 3 Jams



JELLIES

10. Jelly - any variety

SPREADS

11. Butter - any variety
12. Peanut butter

PICKLES (clear glass jar)

13. Choko pickles
14. Pickles - any other variety

CHUTNEY

15. Fruit Chutney
16. Chutney - any other variety

RELISH

17. Caramelised Onion Relish
18. Ripe Tomato Relish
19. Chilli Relish

SAUCES (clear glass sauce bottle)

20. Chilli Sauce
21. Sauce - any other variety

PRESERVES

22. Preserved vegetables

HONEY

23. Local produced Honey



Sponsored by:

ColorTile Port Macquarie



NEEDLEWORK AND YARN WORK

STEWARD:	Lyn Groves (phone 0421 042 614)
ENTRIES ACCEPTED:	Thursday 17th October 2024 between 3pm and 6pm or Friday 18th October 2024 between 8am until 9:30am No entries accepted after 9.30am Friday 18th October 2024
DISPLAY CLOSES:	4:00pm Sunday 20th October 2024 and reopens for collection of items 4:30pm Sunday 20th October
ENTRY FEE:	ADULTS - \$1.00 per item; JUNIORS 16 years & under - FREE
PRIZES:	ADULTS - 1st \$5, 2nd \$3; JUNIORS - 1st \$3, 2nd \$2

If a voucher is given, this will replace the prize money.

CONDITIONS OF ENTRY:

- All entries must be clearly written on the entry form to ensure it goes into the correct class. All entry forms must be signed by the person exhibiting. If there is a class for your item they must be entered into that class.
- Previous prize-winning articles may not be entered and will not be accepted. Entries must have been completed since the 2023 Show.
- All entries must be bona fide work of the person exhibiting.
- It is advisable that all knitted and/or crocheted items have the yarn label attached. Blocking is allowed on completed items.
- Used, soiled or damaged items will not be accepted. White work only may be laundered.
- **Please note:- There must be 3 or more competitive entries in each class of each section, or a prize will not necessarily be awarded.**
- **Please note:- No entries will be available for collection until after 4:30pm Sunday 20th October. Pavilion will close at 4.00pm to enable entries to be dismantled and sorted in a safe manner for your pick up.**



NEEDLEWORK:

CLASS

1. Hand embroidered item (not quilt)
2. Machine embroidered item (not quilt)
3. Cross stitch picture
4. Cross stitch - any other item
5. Cushion - any kind
6. Bag - including pocket
7. Apron
8. Machine made garment



NEEDLEWORK AND YARN WORK - *continued*

PATCHWORK:

CLASS

9. Patchwork quilt - any size - machine or hand quilted by exhibitor
10. Patchwork quilt - machine or hand quilted by professional
11. Patchwork article using recycled materials - machine or hand quilted
12. Christmas patchwork item
13. Patchwork table runner
14. Patchwork wall hanging
15. Patchwork - any other item other than mentioned
16. Appliqué quilt - any size



Creative Yarn (knitting, crochet, felting etc.)

KNITTING:

CLASS

17. Baby items - two or three pieces - ie. jacket and bonnet, bootees
18. Socks, bootees, bed sock or baby shoes
19. Beanie, bonnet or hat
20. Rug or blanket
21. Shawl or scarf
22. Item of clothing - ie. jumper, cardigan
23. Any other item not mentioned in schedule



CROCHET:

CLASS

24. Baby items - 2 or 3 pieces
25. Socks, bootees, bed socks or baby shoes
26. Beanie, bonnet or hat
27. Rug or blanket
28. Shawl or scarf
29. Item of clothing - ie. jumper, dress, or cardigan
30. Duchess set, doily, table topper
31. Bag, ie. handbag, backpack or shopping bag
32. Any other item not mentioned in Schedule



CWA Kendall



NEEDLEWORK AND YARN WORK - *continued*

CREATIVE YARN ITEMS:

CLASS

33. Novelty tea cosy - any method using yarn - ie. knitted, crochet etc. (Please supply a tea pot to display your tea cosy)
34. Knitted or crocheted soft toy
35. Woven item
36. Any other item made from yarn - ie. Felted



JUNIOR SECTION (PRIMARY):

CLASS

37. Hand or machine made soft toy
38. Hand or machine made bag
39. Knitted or crocheted item
40. French knitted item
41. Any other item

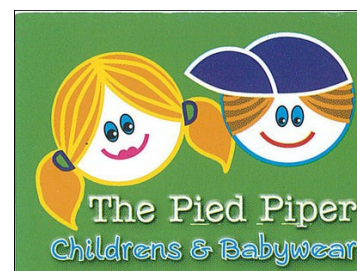


CWA Bonny Hills

JUNIOR SECTION (SECONDARY):

CLASS

42. Hand or machine made soft toy
43. Hand or machine made item of clothing
44. Hand knitted or crocheted item
45. Christmas item
46. Any other item



CWA Port Macquarie

AGRICULTURAL SOCIETIES OF NSW

WOOL ARTICLE / GARMENT COMPETITION

*Winning item for each show will be judged at Group AGM in December/January
and the winner goes to the Sydney Royal Easter Show 2025.*

CLASS 47 - Three (3) different types of wool articles and/or garments with a minimum 80% sheep's wool - can be made by one individual or 3 different exhibitors.

SPONSORS FOR THE NEEDLEWORK SECTION INCLUDE:

*They have provided gift vouchers and/or cash towards our prizes
which will be allocated by the Stewards for each section.*

Kendall Kettles Craft Group

J A Fashions

Stitched 'n Framed

I Love Country

Kendall Craft Co-op - Kendall Station

Country Pickin's - Taree

The Pied Piper

LUSC Friendship Quilters

CWA - Bonny Hills, Port Macquarie & Kendall branches

HANDICRAFTS

STEWARD:	Kay Dollery (phone 0407 708 723)
ENTRIES ACCEPTED:	Thursday 17th October 2024 between 1:00pm till 5:00pm. Friday 18th October 2024 between 8:00am until 9.30am.
ENTRIES CLOSE:	No entries accepted after 9.30am Friday 18th October 2024.
DISPLAY CLOSES:	4:00pm Sunday 20th October 2024 and reopens for collection of items at 4:30pm Sunday 20th October.
ENTRY FEE:	<u>ADULT</u> : \$1.00 per item - <u>JUNIOR</u> : FREE
PRIZES:	<u>ADULT</u> - 1st \$4.00; 2nd \$2.00 <u>JUNIOR</u> - 1st \$2.00; 2nd \$1.00

Some of the classes have gift baskets, or gift vouchers allocated and these will be given as under each class. If a gift basket or gift voucher is given, there will not be any additional prize money allocated for 1st place. 2nd place will receive either a gift voucher or \$2.00. prize money

CONDITIONS OF ENTRY:

- All entries must be clearly written on the entry form to ensure it goes into the correct class - all entry forms must be signed by the person exhibiting.
- All entries must be bona fide work by the person entering.
- Used, soiled or damaged items will not be accepted. White work is the only item that may be laundered.
- All entries must have been completed since the 2023 Show. Older entries not accepted.
- Any number of entries per class accepted.

Please note: There must be 3 or more competitive entries in each class or a prize may not be awarded.

Please ensure that you also read all the conditions printed on page 2 of the Pavilion Schedule.

WOODWORK:

CLASS

1. Wooden article - Furniture
2. Wooden article - Model, e.g. ship, car, or truck
3. Wooden article - Hand carved item
4. Wooden article - Woodturning, e.g. bowl or candlestick
5. Wooden article - Jewellery box or Inlaid item
6. Wooden article - Hand crafted item, e.g. jigsaw puzzle, or game

HANDICRAFTS:

7. Mosaics - any item
8. Ceramics - any item
9. Pottery - Hand built item
10. Pottery - Wheel thrown item
11. Pottery - Sculptural item
12. Acrylic Paint Pour - any acrylic paint pour item

**** Sash for Best in Classes 1 - 12**

HANDICRAFTS ... *continued*

PAPERCRAFTS:

CLASS

13. Scrapbook – feature page/s
14. Paper tole - any item (not greeting card)
15. Creative greeting card - paper tole
16. Creative greeting card - sewn
17. Creative greeting card - stamped
18. Creative greeting card - die cut
19. Creative greeting card - Iris folding
20. Creative greeting card - any type - Christmas theme
21. Any 3-dimensional Papercraft item
22. Any other Papercraft item not mentioned in schedule



**** Sash for Best in Classes 13 - 22**

SPECIAL NEEDS ADULT SECTION:

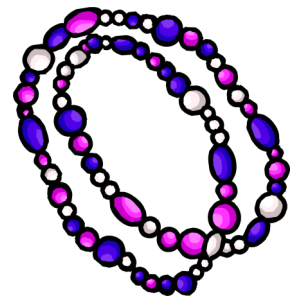
23. Any Handcrafted or Needlework article

SENIOR SECTION:

24. Any Handicraft or Needlework article made by a senior over 80 years of age

JEWELLERY AND BEAD WORK:

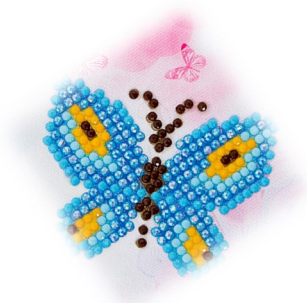
25. Wearable Jewellery
26. Thread work with beads - eg. dolls, bracelets, bookmarks etc.



CREATIVE ART:

27. Diamond Dot Art
28. Tapestry picture – framed or unframed
29. Macramé item - eg. wall hanging, pot plant hanger
30. Any other item not mentioned in the Schedule

**** Sash for Best in Classes 23 - 30**



HANDICRAFTS ... *continued*

PRESCHOOL & SCHOOL AGE SECTIONS

PRESCHOOL:

CLASS

31. Any handcrafted item by an individual
32. Any handicrafts item by a group - may be a collection

**** Sash for Best Entry in Classes 31 - 32**

INFANTS AND PRIMARY STUDENTS:

CLASS

33. Handmade soft toy
34. Article made from wood, cane or metal
35. Handmade greeting card
36. Christmas decoration
37. Article made from recycled materials
38. LEGO - any creative model
39. Any handicraft item not mentioned in the Schedule



**** Sash for Best in Classes 33 - 39**

HIGH SCHOOL STUDENTS:

CLASS

40. Handmade soft toy
41. Article made from wood, cane or metal
42. Handmade greeting card
43. Christmas decoration
44. LEGO - any creative model
45. Article made from recycled materials
46. Any handcrafted or needlework article not mentioned in schedule

**** Sash for Best in Classes 40 - 46**



HANDICRAFTS ... continued

SPONSORS FOR THE HANDICRAFTS SECTION INCLUDE:

They have provided gift vouchers and cash towards our prizes which will be allocated by the Stewards for each section.

Style Country Hairdressing

Alice in Paperland

Amber Tiles - Port Macquarie

Kids Haven Early Learning Centre

TAG - Tactile Arts Group

amber.

Amber Port Macquarie



STYLE COUNTRY HAIRDRESSING

Kerry Tipper
0438 594 459



TAG at Kendall

PHOTOGRAPHY

STEWARD:	Kim Barry (phone 0422 425 120) and Faith Bell
ENTRIES TAKEN:	3:00pm - 5.00pm Thursday, 17th October 2024
ENTRY FEE:	Seniors - \$1 per entry Juniors - 16 years & under – FREE
PRIZES:	Seniors – 1st \$8, 2nd \$5 and 3rd \$3 each Class Juniors – 1st \$8, 2nd \$5 and 3rd \$3 each Class

CONDITIONS OF ENTRY:

1. Entries from amateur photographers only.
2. Junior entrants 16 years and under.
3. Senior entrants 17 years and over.
4. All Senior & Junior entries to be on **cardboard only** with photographs no larger than 30cm x 25cm with a margin of 2cm. Exhibitors name and address must be clearly written on the back.
5. No framed photographs.
6. All photos entered must have been taken by the exhibitor.
7. No photos to be entered if previously entered in the Camden Haven Show.
8. Entries delivered to Steward at Showground office between 3pm and 5pm Thursday 17th October or by prior arrangement with Steward. On no condition can any photo entered be removed unless given permission by the Photography Stewards.
9. Entries can be picked up after 4.30pm Sunday 20th October.
10. Entry fee must accompany photos or entries will not be accepted.
11. Judging will be held on Friday 18th October.

JUNIOR PHOTOGRAPHY – 16 years and under

Sponsored by:

CLASS:

1. Landscapes/seascapes
2. Sports/action
3. Pets and animals
4. "My Family"
5. Plants/Nature



**** SASH FOR CHAMPION JUNIOR PHOTOGRAPHER**

**** COASTLINE CREDIT UNION OVERALL BEST IN JUNIOR SECTION - \$20**

SENIOR PHOTOGRAPHY – 17 years and over

6. Clouds
7. Landscapes
8. Seascapes
9. Sports/action
10. Portraiture



**** SASH FOR CHAMPION SENIOR PHOTOGRAPHER**

**** COASTLINE CREDIT UNION OVERALL BEST IN SENIOR SECTION - \$20**

HORTICULTURE -

FRUIT & VEGETABLES

- STEWARDS:** Matt and Gail Pickett (phone 0432 572 922)
ENTRIES CLOSE: Between 8:30am and 2.30pm Friday 18th October 2024
ENTRY FEE: 50c per item - Juniors 16 years & under FREE
PRIZES: Seniors - 1st \$3.00; 2nd \$2.00 - Juniors – 1st \$3.00; 2nd \$2.00; 3rd \$1.00
CONDITION OF ENTRY: All exhibits must be grown by the exhibitor.

CLASS Quantity

1. 3 Citrus - *any variety*
2. 6 Strawberries
3. 3 Passionfruit
4. 6 Pecan nuts
5. 6 Macadamia Nuts
6. 3 Fruit - *any other variety*
7. 3 Asparagus
8. 3 stalks with 5cm leaf Rhubarb
9. 1 Cabbage - *any variety*
10. 1 Cauliflower
11. 1 Broccoli - *head or bunch*
12. 1 Lettuce – *any variety*
13. 3 Carrots
14. 3 Beetroot
15. 3 Radish
16. 3 Spring Onions
17. 3 Onions - *any variety*
18. 3 Leeks
19. 3 Silverbeet / Chard
20. 3 Salad Greens - *any variety*
21. 6 Beans - *any variety*
22. 6 Peas - *any variety*
23. 3 Sweet potatoes - *any variety*
24. 1 Squash / Marrow - *any variety*
25. 1 Pumpkin - *any variety*
26. 6+ Collection of vegetables
27. 1 Vegetables - *any others*
28. 6+ Collection of herbs
29. 12 Eggs, brown
30. 12 Eggs, white



**** SASH FOR BEST EXHIBIT OVERALL**

Plus Cash Prize \$20 & \$50 Greenbourne Nursery voucher
*** RESERVE BEST EXHIBIT - \$10 from Coastline Credit Union**

**** SASH FOR MOST SUCCESSFUL EXHIBITOR**

PLUS Cash Prize \$20 & \$50 Greenbourne Nursery Voucher
*** RESERVE MOST SUCCESSFUL EXHIBITOR - \$10 from Coastline Credit Union**

FRUIT & VEGETABLES ... *continued*

JUNIOR SECTION: *Children under 14 years*

CLASS	Quantity
1.	3 Citrus – <i>any variety</i>
2.	6 Collection of Fruit and /or nuts
3.	1 Pumpkin/Squash/Gramma
4.	3 Radishes
5.	3 Carrots
6.	1 Lettuce – <i>any variety</i>
7.	3 Beans and/or peas
8.	3 min. Collection of Vegetables
9.	6 Eggs – <i>any type or colour</i>
10.	Sculpture - made from fruit and vegetables, need not be grown by exhibitor



**** SASH FOR BEST JUNIOR EXHIBIT OVERALL - Plus Cash Prize \$20**

*** RESERVE BEST JUNIOR EXHIBIT - \$10 from Coastline Credit Union**

**** SASH FOR MOST SUCCESSFUL JUNIOR EXHIBITOR - Plus Cash Prize \$20**

*** RESERVE MOST SUCCESSFUL JUNIOR EXHIBITOR - \$10 from Coastline Credit Union**

**Sponsored by: Kendall District Gardeners, Camden Haven Garden Club,
Bonny Hills Nursery, Coastline Credit Union, Midcoast Garden Friends,
Greenbourne Nursery.**



**Greenbourne Nursery & Gift shop
Wauchope**



**Bonny Hills
Garden Centre**



POT PLANTS & CUT FLOWERS

- STEWARDS:** John and Sue Carter (phone 6556 9677)
ENTRIES: will be received from 8:30am to 2:30pm on Friday 18th October -
- extended to 4:30pm for Junior entries only.
ENTRY FEE: Open - \$1 per item; Juniors (16 years & under) - FREE.
PRIZES: Open classes - 1st \$4; 2nd \$2. Juniors - 1st \$2; 2nd \$1.
Please note: General Conditions of Entry are on Page 2 of this Schedule.

Other Conditions:

AOV means "Any Other Variety". NND means "Not Necessarily Distinct".
Adding or combining Classes shall be at the discretion of the Stewards.
All Pot plant entries shall have been owned and in the care of the Exhibitor
for at least three months.

POT PLANTS:

CLASS

1. African Violet
2. Begonia
3. Bromeliad (pot or mount)
4. Fern (pot, basket or mount)
5. Cactus (single)
6. Succulent (single)
7. Cactus or succulent garden
8. Geranium/Pelargonium
9. Native - flowering or foliage - AOV
10. Foliage -AOV
11. Flowering - AOV
12. Hanging Basket - AOV



ORCHIDS:

13. Australian Native – species or hybrid
14. Cattleya Group hybrid
15. Paph/Phrag - species or hybrid
16. Exotic Dendrobium - species or hybrid
17. Any other species
18. Any other hybrid

BONSAI:

19. Informal
20. Group planting
21. New, under 3 years
22. Native plus fig

***Sponsored by: Kendall District Gardeners, Midcoast Garden Friends,
Camden Haven Garden Club, Greenbourne Nursery, Coastline Credit Union,
Ron Chapman & Bonny Hills Nursery.***

POT PLANTS & CUT FLOWERS ... *continued*

CUT FLOWERS (on stems)

ROSES Entry Requirement

- | | | |
|-----|------------|-----------------------------|
| 30. | 1 cut | Red |
| 31. | 1 cut | Pink |
| 32. | 1 cut | White |
| 33. | 1 cut | Cream, Yellow |
| 34. | 1 cut | Any other colour or variety |
| 35. | 3 cuts NND | Floribunda |
| 36. | 3 cuts | Miniature |

CUT FLOWERS (Other)

- | | | |
|-----|-------------------|--|
| 37. | 1 cut | Callistemon (bottlebrush) |
| 38. | 3 cuts | Grevillea |
| 39. | 1 cut | Australian Native - AOV |
| 40. | 1 cut | Antirrhinum |
| 41. | 3 - 6 cuts NND | Carnation/Dianthus/Pinks |
| 42. | 3 cuts NND | Coleus |
| 43. | 6 - 12 blooms NND | Daisies |
| 44. | 3 - 6 cuts NND | Geranium/Pelargonium |
| 45. | 1 cut | Gerbera - Single |
| 46. | 1 cut | Gerbera - Double or Semi |
| 47. | 1 cut | Hippeastrum - Red |
| 48. | 1 cut | Hippeastrum – <i>any other colour</i> |
| 49. | 6 - 12 blooms NND | Pansies or Violas |
| 50. | 6 cuts NND | Pentas, Salvias, Statis |
| 51. | 3 - 6 cuts NND | Sweet Peas |
| 52. | 6 cuts NND | Flowers from bulbs/tubers/rhizomes AOV |
| 53. | 3 cuts NND | Flowering Scrub - AOV |
| 54. | 1 cut | Single Bloom – AOV |
| 55. | | Any other floral exhibit |



POT PLANTS & CUT FLOWERS ... *continued*

FLORAL ART

56. Foliage Only
57. Shoulder Spray or Buttonhole
58. Dining Table Arrangement
59. Mixed Arrangement

Vase of blooms with greenery

60. 5 distinct Stems – red, pink and/or white
61. 5 distinct Stems – all one colour combinations
62. 5 distinct Stems - all one colour

JUNIOR - Children 16 years & under

63. Buttonhole/Shoulder spray
64. Saucer (display in wet sand, covering edge)
65. Any other Floral Exhibit
66. Display of Mixed flowers in a **GUM BOOT**

A Special Prize of \$10 will be awarded to the winning entry in Class 66! Donated by Ron Chapman.

PRIZES:

- | | | |
|---|---|------|
| * | Best Pot Plant - classes 1 to 22 | \$20 |
| * | Best Cut Flower - classes 30 to 55 | \$20 |
| * | Best Floral Art - Open - classes 56 to 61 | \$20 |
| * | Best Floral Art - Junior - classes 62 to 66 | \$15 |

**** GRAND CHAMPION - Sash + \$50 Special Award from Coastline Credit Union**

**** MOST SUCCESSFUL EXHIBITOR - Sash + \$50 Special Award from Coastline Credit Union**

FREE DEMONSTRATIONS

Come along and learn lots about the wonderful world of gardening!

Demonstrations to be held in the Pavilion:

- ⇒ Propagation & repotting
- ⇒ Soil, composting & fertilisers
- ⇒ Vegetable growing

Saturday & Sunday - 11:00am - 12:00pm - 1:30pm





Entry forms & fees to:
Camden Haven PAH&I Society Inc.
PO Box 23
KENDALL NSW 2439

ENTRY FORM

Section Name:

Name of Exhibitor:

Address:

Phone:

Declaration:

I agree to abide by the conditions set out in the relevant section in this schedule and will not hold the Camden Haven PAH&I Society Inc. responsible for any loss or damage to any of the exhibits during the Show.

I agree to collect my items between 4:30pm and 6:00pm Sunday 20th October.

Signature of Exhibitor: **Date:**

Class No	Class Name

Entry Fees: \$ payable to Camden Haven PAH&I Society.

*Any prize money not collected by Wednesday 23rd October 2024,
 will kindly be accepted as a donation to the Show Society.*



Entry forms & fees to:
Camden Haven PAH&I Society Inc.
PO Box 23
KENDALL NSW 2439

ENTRY FORM - ADULT ART

Section Name:

Name of Exhibitor:

Address:

Phone:

Declaration:

I agree to abide by the conditions set out in the relevant section in this schedule and will not hold the Camden Haven PAH&I Society Inc. responsible for any loss or damage to any of the exhibits during the Show.

I agree to collect my items between 4:30pm and 6:00pm Sunday 20th October.

Signature of Exhibitor: **Date:**

Class No	Title of Work	Medium	Price	Rec'd	No

Entry Fees: \$ payable to Camden Haven PAH&I Society.

*Any prize money not collected by Wednesday 23rd October 2024,
 will kindly be accepted as a donation to the Show Society.*



Entry forms & fees to:
Camden Haven PAH&I Society Inc.
PO Box 23
KENDALL NSW 2439

ENTRY FORM

YOUTH ART & CREATIVITY GALLERY

Name of Exhibitor:

Address:

Date of Birth: **Age:** **Year / Grade:**

School attending:

Declaration:

I agree to abide by the conditions set out in the relevant section in this schedule and will not hold the Camden Haven PAH&I Society Inc. responsible for any loss or damage to any of the exhibits during the Show.

I agree to collect my items between 4:30pm and 6:00pm Sunday 20th October.

Signature of Exhibitor: **Date:**

Section	Title of Work	Show Class

*The Camden Haven PAH&I Society Inc. sincerely thanks all
the sponsors who have supported
our Pavilion Schedule of Events:*

- ✓ Your Family Practice
- ✓ ColorTile Port Macquarie
- ✓ Kendall District Gardeners
- ✓ Midcoast Garden Friends
- ✓ Greenbourne Nursery
- ✓ Ron Chapman
- ✓ Kendall Kettles Craft Group
- ✓ Kendall Craft Co-op
- ✓ J A Fashions
- ✓ CWA Kendall
- ✓ CWA Bonny Hills
- ✓ CWA Port Macquarie
- ✓ TAG - Tactile Arts Group
- ✓ Alice in Paperland
- ✓ Amber Tiles Port Macquarie
- ✓ Country Pickens Taree
- ✓ The Pied Piper
- ✓ Style Country Hairdressing
- ✓ Hastings Valley Fine Arts
- ✓ Miss Nellie's Café
- ✓ Coastline Credit Union
- ✓ Taste Bakehouse
- ✓ Stitched 'n Framed
- ✓ Camden Haven Garden Club
- ✓ Bonny Hills Nursery
- ✓ I Love Country
- ✓ Kids Haven Early Learning Centre
- ✓ Dru Yoga
- ✓ LUSC Friendship Quilters

